



Blondin Way, London, SE16 6AZ

A spacious, one bedroom duplex apartment located in Rotherhithe only a short walk from Stave Hill Ecological Park, river Thames overlooking Canary Wharf and Canada Water Station.

The apartment features a modern open plan kitchen and reception room with space to dine and access to a private balcony, a spacious double bedroom, office on ground floor and a stylish bathroom. Additional storage can be found in the hallway.

The surrounding area boasts a plethora of local amenities such as cafes, bars, restaurant, Russia Dock Woodland, bus routes into central London and ferry access to Canary Wharf.

- Parking Included
- Modern One Bedroom, Duplex Apartment
- Excellent Location
- Private Balcony
- Good Transport Links
- Next to Woodland

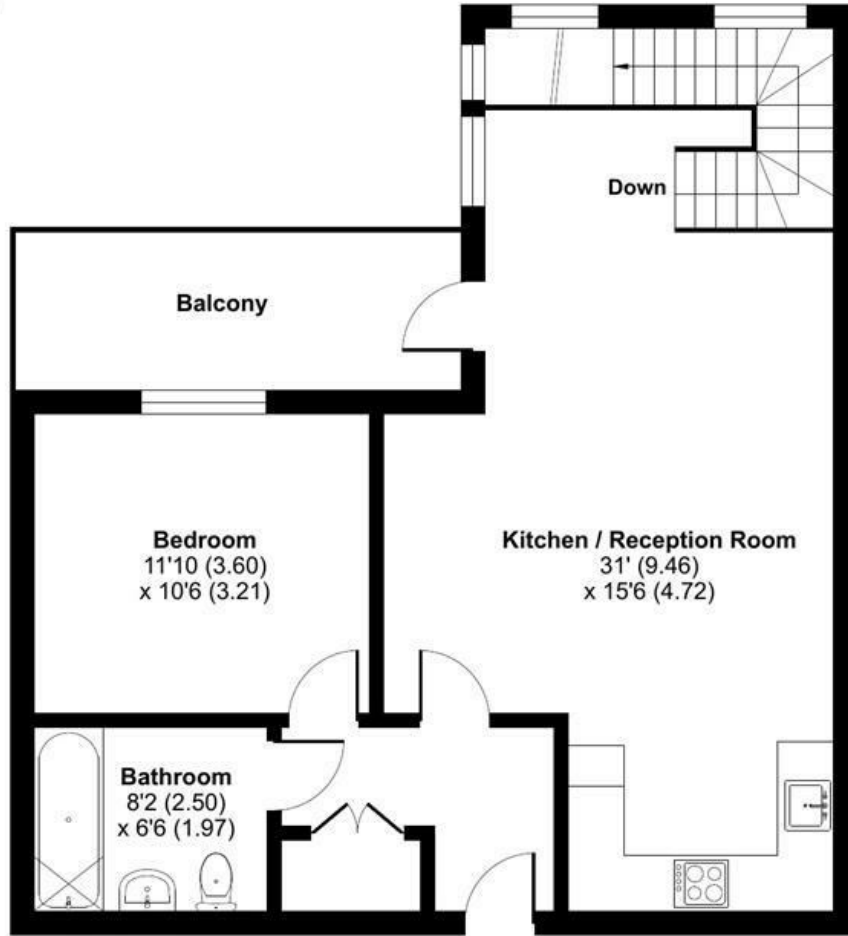
£2,100 Per month

Alex & Matteo
ESTATE AGENTS

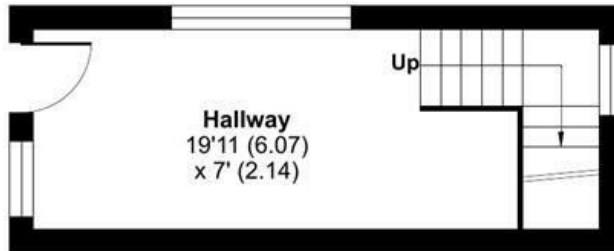
Hawthorn House, 5 Blondin Way, London, SE16

Approximate Area = 798 sq ft / 74.1 sq m

For identification only - Not to scale



FIRST FLOOR



GROUND FLOOR



Floor plan produced in accordance with RICS Property Measurement 2nd Edition, Incorporating International Property Measurement Standards (IPMS2 Residential). © nichecom 2025. Produced for Alex & Matteo Estate Agents. REF: 1268849

Energy Efficiency Rating		Current	Potential
Very energy efficient - lower running costs			
(92 plus) A			
(81-91) B			
(69-80) C		78	78
(55-68) D			
(39-54) E			
(21-38) F			
(1-20) G			
Not energy efficient - higher running costs			
England & Wales		EU Directive 2002/91/EC	